

# NOMAD PRO™

Handheld X-ray System



**Starting now,  
being “off the wall”  
is a good thing.**



## Handheld X-ray System

### The NOMAD® Pro Difference:

**LIGHTWEIGHT** - Weighs only 5.5 pounds!

**SAFE** - Multiple third-party studies have proven -- NOMAD IS SAFE!

**RECHARGEABLE** - One charge produces hundreds of x-rays.

**ECONOMICAL** - One NOMAD Pro does the work of multiple conventional x-ray systems. Improves workflow, fast, and convenient.

**PRACTICAL** - Handheld design allows operator to stay with the patient during procedure.

**SIMPLE** - No bulky arms, backing plates for walls, special cabinets or costly electrical hookups.

**VERSATILE** - In or out of the office, NOMAD Pro goes anywhere! Perfect for use with children, sedated, and special needs patients.

### The "Off the Wall" Solution



*"When I built my office, I had to decide whether to use wall mounted x-ray machines or go with the NOMAD Pro handheld x-ray. Now we are using the NOMAD Pro on a daily basis, I am very glad that we chose to use it. One NOMAD Pro saved the money in construction costs vs. the cost of multiple wall mounted x-ray machines for a four-operator solution we have in our practice. Very well worth it!"*

**Joseph Hidalgo, DDS**

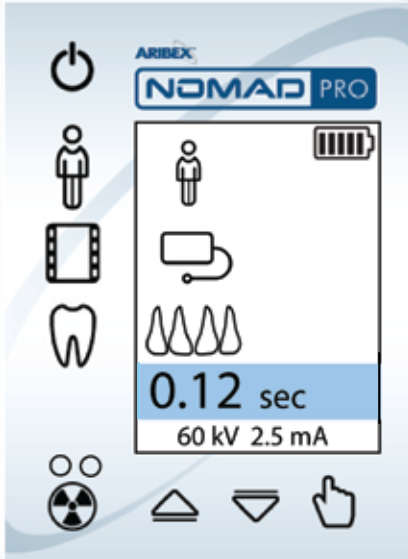
*"NOMAD has been a wonderful addition to my office. My assistants praise the NOMAD for its simplicity and say that it is quicker to maneuver and easier to aim than a wall-mounted x-ray unit. The NOMAD pays for itself because it has reduced chair time required for radiographs. I only need one or two per office and it can also be transported to my satellite office."*

**Sam J. Nechamkin, DDS**



# Revolutionizing the Modern Dental Office

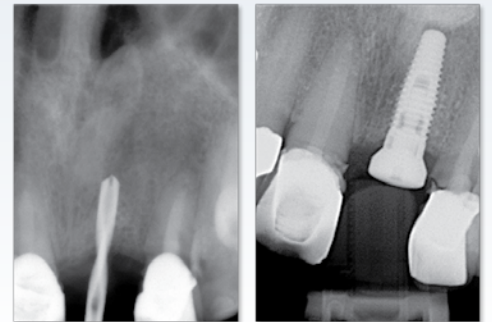
## Easy-to-Use Color LCD Control Panel



Simple touch controls quickly adjust to identify technique factors. The NOMAD Pro automatically sets the exposure time based on your selections. You may also save custom exposure settings. Easy to learn, the NOMAD Pro is ready for use in minutes!

## Produces Sharp, Clear Images

The NOMAD Pro produces high-quality diagnostic images with digital sensors, films, and phosphor plates. Because of the short exposure time there is no blur from hand movement.



Depth and placement check during implant procedure

Placement of implant after surgery  
X-rays courtesy of Dr. Eric Vogel, DDS, and Eileen Bidstrup

## Rechargeable Convenience

The NOMAD Pro system comes with two battery handsets and a charging cradle to ensure that the NOMAD Pro is always ready to go.



For more information or to schedule a demonstration in your office, contact your equipment specialist today!

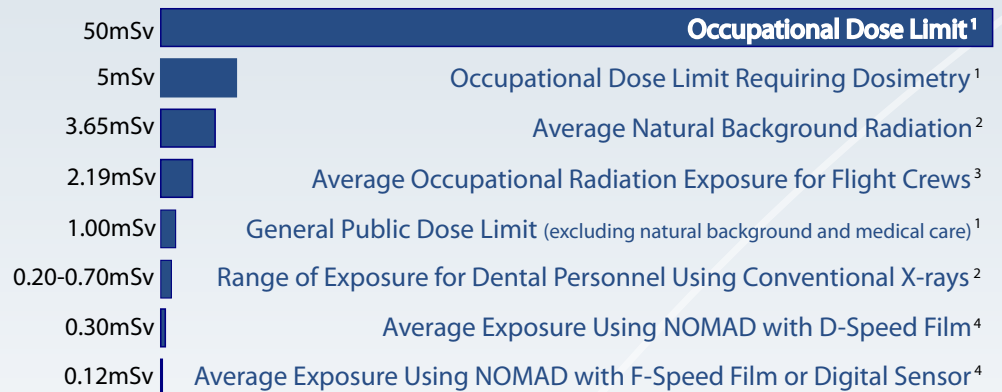
## Safe for the User and Patient

The NOMAD Pro represents a new class of x-ray, one that can be held by the operator. Because of the integrated shielding and backscatter shield, multiple independent studies have proven the NOMAD Pro to be safe for the operator and patient.

For more information on NOMAD Pro safety, go to <http://www.aribex.com/products/nomadpro/safety.html>.



### Comparative Data for Whole Body Exposure (Annual)



1) Standards for Protection Against Radiation, 10 CFR 20 (US Federal Standards), 1994 (see also *NCRP Report No. 116*)

2) *NCRP Report No. 145* (National Council on Radiation Protection and Measurements), p7-9

3) "Estimated Cosmic Radiation Doses for Flight Personnel," Feng YJ et al, *Space Medicine and Medical Engineering*, 15(4) 2002, p265-9

4) Normalized average assumes 7,200 exposures per year, and the average length of exposure for D-speed=0.50 seconds, F-speed=0.25 seconds, digital sensor=0.20 seconds



**Aribex, Inc.**  
**744 South 400 East**  
**Orem, UT 84097 USA**

**Phone: 801-226-5522**  
**Toll Free: 866-340-5522**  
**Fax: 801-434-7233**

Aribex Products



Made in the USA

### NOMAD PRO™ Tech Specs

Battery	Lithium Polymer, 22.2V, 1.25 Ahr
Anode voltage	60 kV true DC
Anode current	2.5 mA
Exposure time range	0.02 - 1.00 s
Focal spot	0.4 mm
Inherent filtration	>1.5 mm Al equivalent
Source to skin distance	20 cm
X-ray field	60 mm round
Maximum duty cycle	1:60
Total weight	2.5 kg (5.5 lbs.)
Approximate dimensions	W 16 cm L 27 cm H 25 cm (W 6.25" L 10.75" H 10")

NOMAD Pro is designed and manufactured in compliance with IEC 60601-1, 60601-1-2, 60601-1-3, 60601-1-4, 60601-2-7, 60601-2-28, and with DHHS Rules 21 CFR Subchapter J, applicable at date of manufacture.